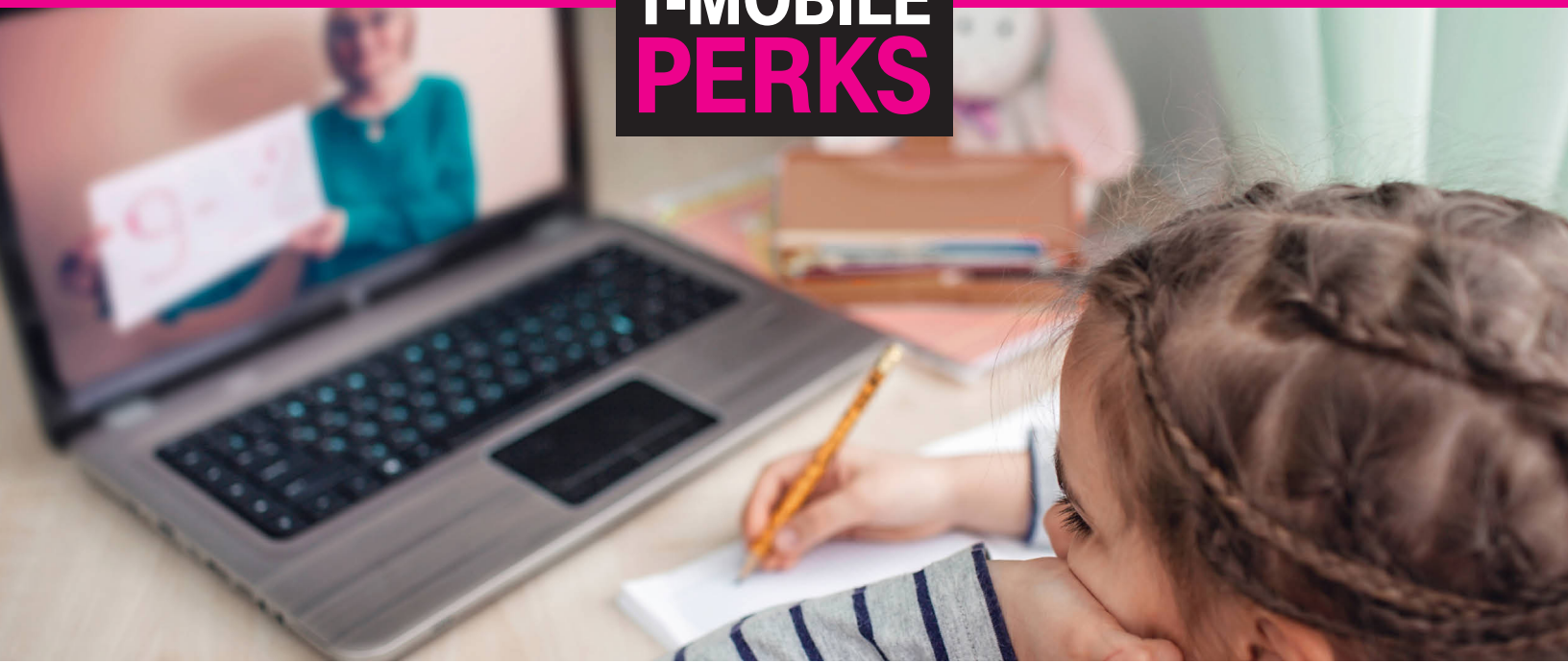


Because you work at St. Vrain Valley School District

T-MOBILE PERKS



SWITCH & SAVE \$200

Get premium features like Netflix, international texting and data, and free stuff every week with T-Mobile Tuesdays—all with taxes and fees included.

Netflix: 2+ lines req'd. Standard, up to 2 HD screens.

with **\$10/mo discount** on premium
UNLIMITED Talk, Text and Data!

Req. new acct. on Magenta Plus with Autopay & validation. \$5/mo./line discount up to 2 lines for 20 mo. 1st credit applied w/i 2 bills. During congestion, customers using >50GB/mo. may notice lower speeds than other customers due to data prioritization. Video typically streams on smartphone at DVD quality (480p).

Be sure to mention your employer to receive this offer.



855-570-9947



<https://t-mo.co/30SmlQ3>



t-mobile.com/store-locator

Additional Perks Information:
<https://t-mo.co/30SmlQ3>
New & existing customers may
call: **855-570-9947**

T | **T-MOBILE
FOR BUSINESS**

Limited time offer, subj. to change **T-Mobile Perks**: Qualifying credit, new acct. with 12 or less lines, & port-from AT&T, Verizon, or Claro required. Validate eligible employment w/i 30 days of activ. (ongoing verification). Must be active & in good standing to receive credits. Credits may stop if you cancel a line. May not be combined with some offers/discounts. Restrictions apply. Limit 1 T-Mobile Perks Corp node per acct. **Magenta Plus**: Credit approval, deposit, \$10 SIM card, and, in stores & on customer service calls, \$20 assisted or upgrade support charge may be req. Unlimited talk & text features for direct communications between 2 people; others (e.g., conference & chat lines, etc.) may cost extra. Unlimited high-speed data US only. In Canada/Mexico, up to 5GB high-speed data then unlimited at up to 256kbps. Not avail. for hotspots & some other data-first devices. Capable device required for some features. Activ. required to deliver video streams at speeds that provide **Netflix**: Receive Netflix Standard (up to a \$12.99/mo. value) with 2+ qual'g lines in good standing. Value may be applied to different Netflix streaming plans. Not redeemable or refundable for cash. Cancel Netflix anytime. Terms apply: www.netflix.com/termsofuse. 1 offer per T-Mobile acct.; may take 1-2 bill cycles. See t-mobile.com/netflix for add'l info. For the small fraction of customers using >50GB/mo., primary data usage must be on smartphone & is prioritized over MHS (tethering) usage, which may result in higher speeds for data used on smartphones. Service may be terminated or restricted for excessive roaming. **Coverage** not available in some areas. **Network Management**: Service may be **slowed, suspended, terminated, or restricted** for misuse, abnormal use, interference with our network or ability to provide quality service to other users, or significant roaming. See T-Mobile.com/OpenInternet for details. See **Terms & Conditions** at www.T-Mobile.com. T-Mobile, the T logo, Magenta & the magenta color are registered trademarks of Deutsche Telekom AG. © 2020 T-Mobile USA, Inc.

N205411